

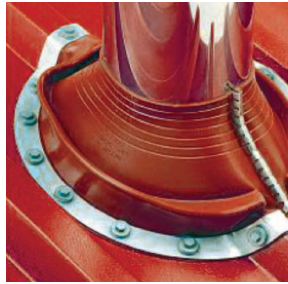
DEKTITE RETROFIT

Dektite Retrofit flashes around existing or difficult to access pipes with built in crimps. Snaps together without the need for loose clips.

- Wrap around existing pipes
- Snaps together in seconds with built in crimps
- Aluminium base for easy profile moulding
- EPDM: temperature range from -50°C to 115°C and up to 150°C intermittently
- Silicone: temperature range from -60°C to 200°C and up to 250°C intermittently



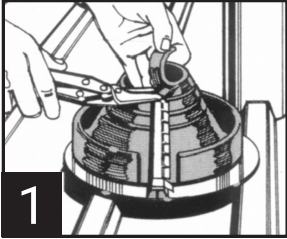
Code: Grey EPDM	Code: Red Silicone	Pipe OD (mm)	Base (mm)	Roof Pitch
RF801G	RF901	20-70	160	Up to 40°
RF802G	RF902	50-185	273	
RF803G	RF903	85-255	369	



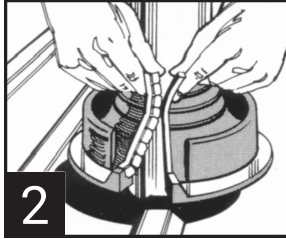
Depending on penetration size, roofing profile and pitch, additional flashings may be required for New Zealand building code requirements. See pg 34.

DEKTITE RETROFIT (CONT.)

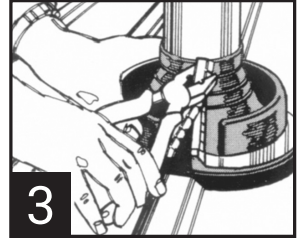
Installation instructions



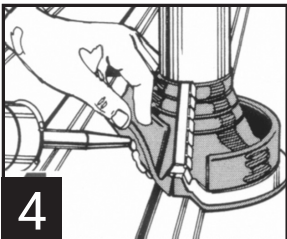
Measure pipe diameter and trim cone.



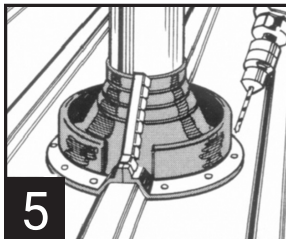
With clip in down-stream position, tension top of cone around pipe and engage metal teeth in opposing pockets.



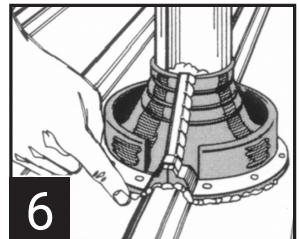
To assist in locating clip into pocket, place hand behind the seam.
Fasten clip with pliers or multi-grips, working from top to base.



Press the Dektite base to contour of roof profile.
Apply bead of neutral cure 100% silicone sealant to the underside.



Fasten flashing with washered self drilling screws.
As per diagram, secure clip by placing a fastener either side of the clip first.



Apply sealant to top of crimp closure and any other potential leak areas.